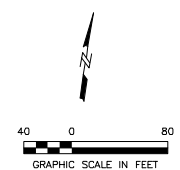
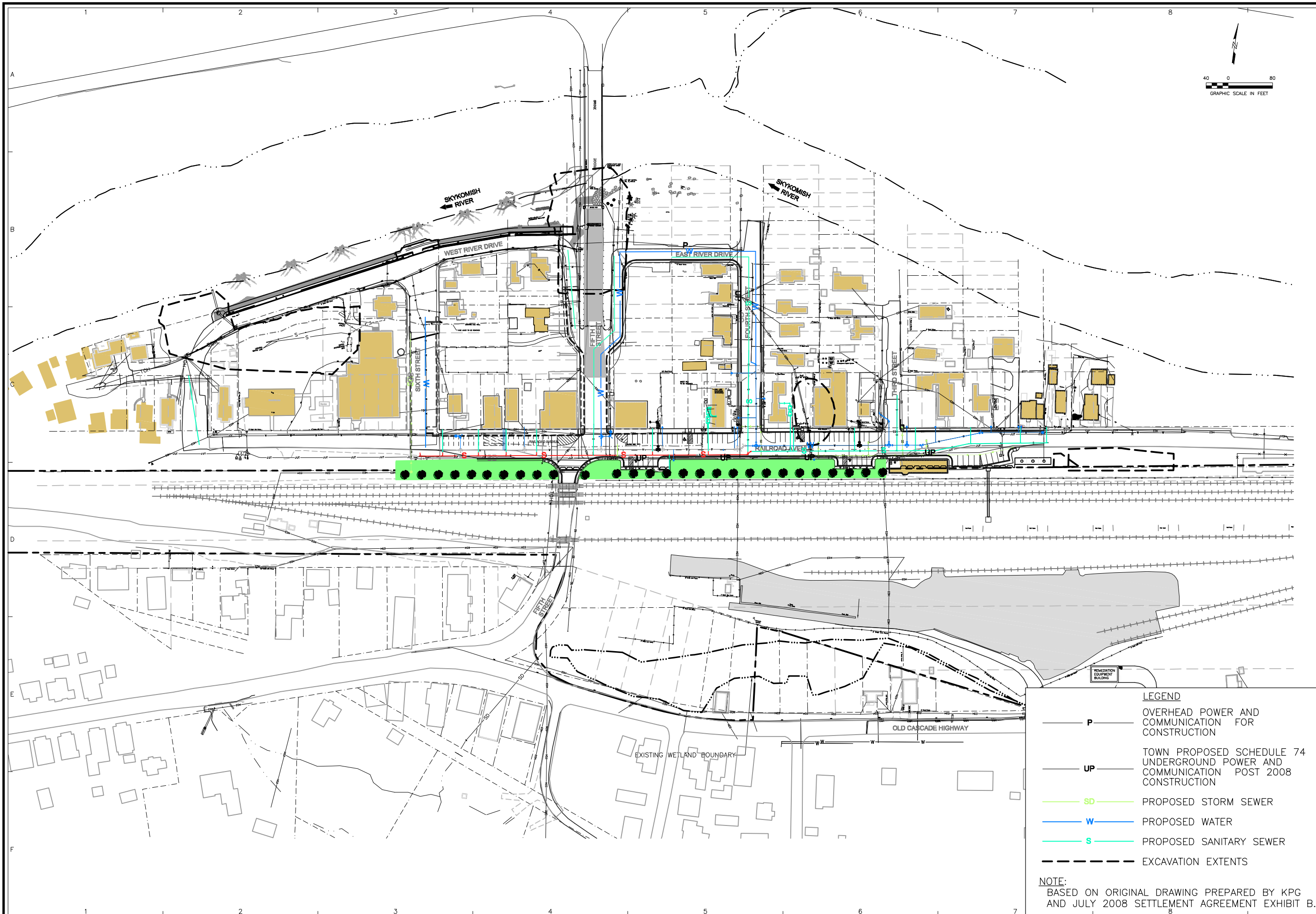


Appendix B

2010 Conceptual Restoration Plan

File: F:\PROJECTS\BNSF\Skykomish\2010\CAD\CONSTRUCTION\WPPRINT_9-16-09\REVISONS_0914092\REVISONS_0914091\2010-EDR CONCEPT PLAN.dwg Layer: ANSL_D User: vrsrshab Plotfile: Oct 02, 2009 - 10:25am Xref's:



LEGEND	
	OVERHEAD POWER AND COMMUNICATION FOR CONSTRUCTION
	TOWN PROPOSED SCHEDULE 74 UNDERGROUND POWER AND COMMUNICATION POST 2008 CONSTRUCTION
	PROPOSED STORM SEWER
	PROPOSED WATER
	PROPOSED SANITARY SEWER
	EXCAVATION EXTENTS

NOTE:
 BASED ON ORIGINAL DRAWING PREPARED BY KPG AND JULY 2008 SETTLEMENT AGREEMENT EXHIBIT B.

NO	DATE	REVISION	CHKD	DATE	APPVDATE
7					
6					
5					
4					
3					
2					
1					
0					

KPG
 CONSULTING ENGINEERS
 1000 1st Avenue, Suite 200
 Seattle, WA 98101-3874
 (206) 624-8549
 www.KPG.com

AECOM
 AECOM Environment
 Seattle, WA 98101-3874
 (206) 624-8549
 www.AECOM.com

THE BNSF RAILWAY COMPANY
 FORMER MAINTENANCE AND
 FUELING FACILITY
 SKYKOMISH, WASHINGTON

PROJ. NO.: 01140-284-0640 DATE: 10/05/09

**2010 CONCEPTUAL
 RESTORATION PLAN**

2010 REMEDIATION

DRAWING NUMBER:
SHEET NUMBER:
REVISION: