



Welcome to the first edition of the Skykomish Scoop! This newsletter will share information about cleanup activities with the Skykomish community, as well as interested members of the public outside of Skykomish. Content for the newsletter is provided by BNSF, and the Department of Ecology.

### **Cleanup Progress Report**

Work is beginning on the cleanup of the Levee Zone. Residents have moved out of the houses that need to be relocated, and the construction contractor has begun preparing the site for upcoming construction activities. You'll start to see daily activities in the construction area, as houses are shored up and moved, areas are cleared and graded, and equipment is readied for the work ahead. Ecology and BNSF are working with the community on a daily basis to address any concerns that arise, so the cleanup work can be completed safely and on time.

- July 1, 2006  
Excavation work begins in the Skykomish River
- August 30, 2006  
Work in the Skykomish River is complete
- November 30, 2006  
Foundations rebuilt and houses are returned to their original location
- June 30, 2007  
All work completed, including restoring landscaping and other seasonal activities

### **What's the schedule?**

BNSF and Ecology have developed a general construction timeline, and the contractor carrying out the work is refining the timeline as conditions change. The dates below are the best estimates for when activities will take place, but are still subject to change. The best place to find the most updated schedule is the Skykomish Cleanup website, at [www.SkykomishCleanup.com](http://www.SkykomishCleanup.com).

Construction activities are expected to take place between 7 am and 7 pm, Monday through Saturday. If timelines require that construction activities take place at other times or on other days, BNSF, Ecology and the contractor will work with the Town to determine the best approach.



**Where will most of the activity take place?**

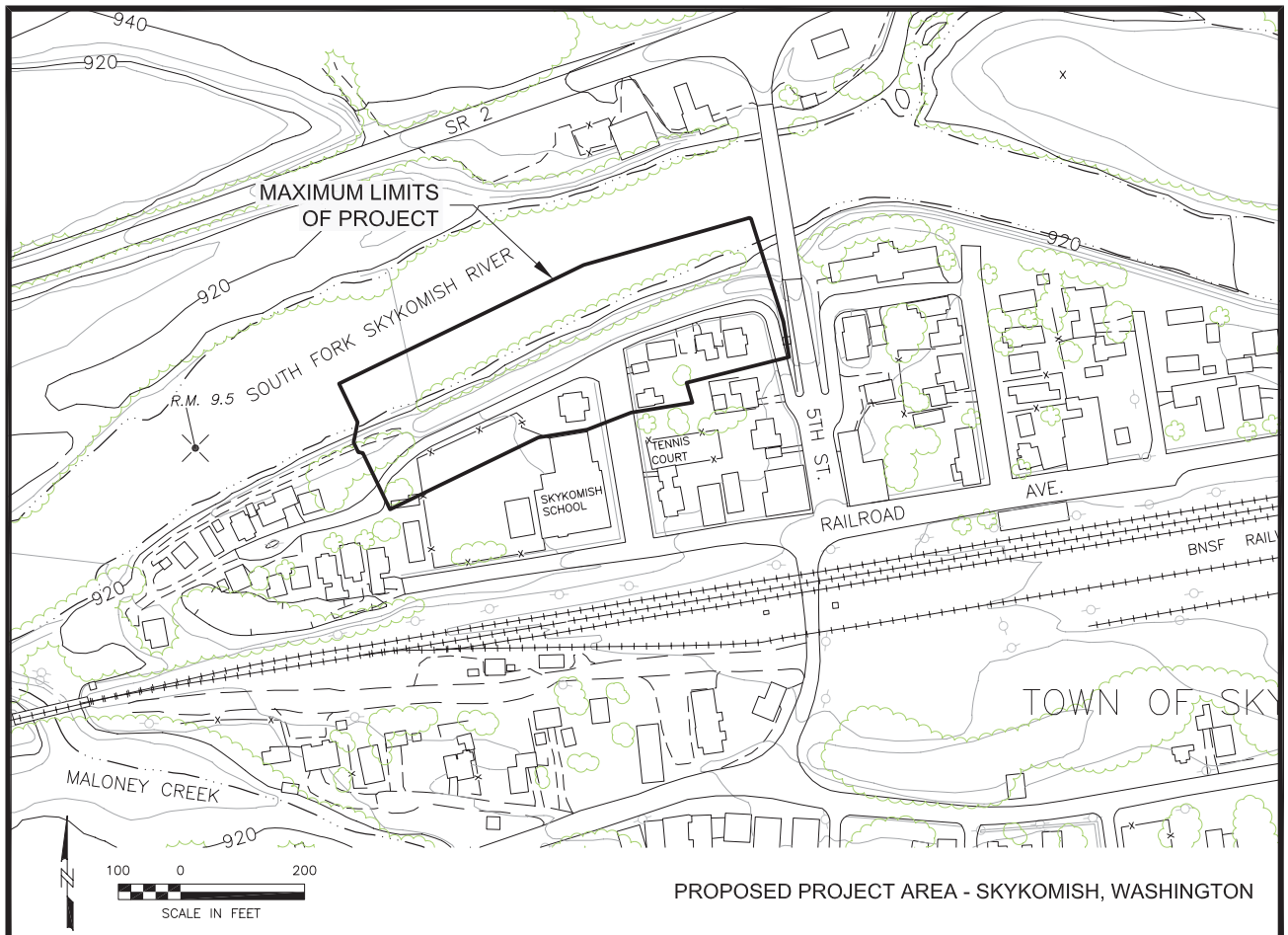
Excavation will begin in the levee and river bottom, and will move to nearby upland areas as the summer progresses. Construction fencing will be placed around the areas to be excavated and on the railyard.

**How will soil and sediment be moved out of Skykomish?**

Traffic plans for moving excavated material through Skykomish include transporting material from the levee and river areas in trucks to the railyard. These trucks are completely sealed to prevent any soil, sediment, or water from leaking onto the ground. Once at the railyard, the contaminated material will be loaded onto railcars for disposal.



*Image to Right: Artists concept for the Skykomish Levee*



PROPOSED PROJECT AREA - SKYKOMISH, WASHINGTON



## **A Community-Based Cleanup**

*Clint Stanovsky, Community Technical Coordinator,  
Town of Skykomish*

Thanks to a joint effort by the Department of Ecology, BNSF Railway and the Town of Skykomish, the community's vision for Skykomish will soon begin to take shape. After the first phase of the cleanup is completed this fall, the restored levee neighborhood will offer river access for residents and visitors, and the levee will provide habitat for fish and flood protection for the Town.

Ecology's community-based approach to the cleanup helped Skykomish define its goals for the future as part of the Vision 2010 plan, and the resulting ideas will help guide Ecology's cleanup plans. The community-based approach recognizes that residents and businesses of the Town have a large stake in the cleanup plans and activities. The Town and its citizens have a place at the table with Ecology and BNSF as the state's cleanup regulations are implemented in the community.

### **Meeting with the Contractor: June 22, 2006**

The construction contractor, Wilder Construction, will be hosting a community barbecue on June 22, 2006 at 5:30 pm at the Skykomish Ballfield. All are welcome to this informal event, where you'll have the chance to meet the contractors who will be working in your community this summer.

### **Need more information?**

BNSF and Ecology have developed a Skykomish Cleanup website at [www.SkykomishCleanup.com](http://www.SkykomishCleanup.com). This website will provide current information on upcoming construction activities, photos, documents, and other information of interest to the community. You can also find links to the final cleanup documents for the Levee Interim Action, as well as Ecology's response to public comments as part of the Responsiveness Summary. These documents can also be found on the Department of Ecology's website, at [http://www.ecy.wa.gov/programs/tcp/sites/bnsf\\_sky/bnsf\\_sky.html](http://www.ecy.wa.gov/programs/tcp/sites/bnsf_sky/bnsf_sky.html).

Information | in person & online

## Questions or Concerns?

You can reach BNSF or Ecology staff in a number of ways.

- Talk with the on-site public involvement person. During construction activities, Ecology and BNSF will have staff on-site who can answer questions from the public.
- Send an email to [info@skykomishcleanup.com](mailto:info@skykomishcleanup.com). This email address will notify both Ecology and BNSF of your question or concern.
- Call the Skykomish Call Line at 1-800-228-1849. Leaving a message at this number will alert BNSF and Ecology staff carrying a pager. They will respond to your message promptly.

### **Safety Notes**

As construction work gets underway, residents will see an increase in truck traffic through downtown Skykomish. Though there will be flaggers and other safety personnel onsite, pedestrians and bicyclists need to be alert at all times as they move through town. Parents, this is a great time to remind children of the need to pay extra attention as they play in areas near construction. Remember, if you can't see the driver's rear or side view mirror, they can't see you!

## Skykomish businesses OPEN during cleanup!

- Cascadia Inn and Restaurant
- Homestead Vintage Stove Company
- SkyRiver Inn
- Whistling Post Tavern